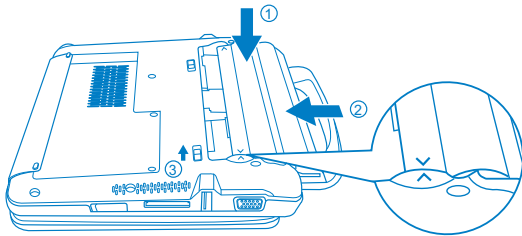


2 Installing and Charging Battery

Install Battery

PC must be powered off before installing or removing the battery.

1. Align arrows on the battery with arrows on the battery bay.
2. Slide the battery down gently but firmly until it locks.
3. Slide the lock switch into the locked position.



Charge Battery

1. Connect the **AC Power Cord** to the **Power Adapter**
2. Connect the **Power Adapter** to the computer **Power Input**.
3. Plug the **Power Cord** into a **Power Outlet**
4. **LED Battery light indicator** will turn orange when charging and green when fully charged

**If LED Battery light indicator is Blinking Orange or not lit, the battery is not charging. Please check connection and battery installation.*

IMPORTANT:

The battery must be charged for at least **six hours** before first use. The battery charge indicator will become green when the battery is fully charged. Keep the power cable away from young children.

5 Calibrating the Screen and Connecting

Calibrate the Touch Screen

If the cursor does not properly track the stylus pen, please follow the below steps.

1. Single Click the Blue Home Key
2. Select the Quick Controller icon
3. Select the Calibrate Screen icon
4. Using the stylus, touch and hold each flashing mark that appears on screen.

Connecting to the Internet

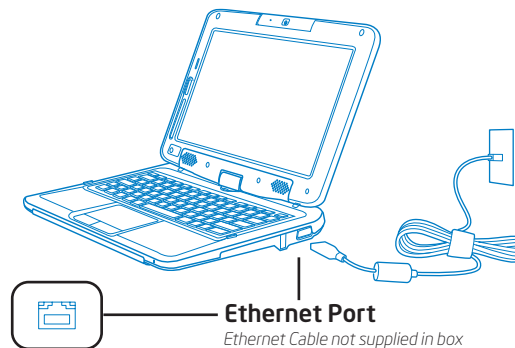
There are two ways to connect to the internet:

Set Up a Wireless Connection

1. Single Click the Blue Home Key
2. Select the Easy Network icon
3. Select Turn on Wireless
4. Wireless LED will turn green

Set Up an Ethernet Connection

1. Single Click the Blue Home Key
2. Select the Easy Network icon
3. Select Turn off Wireless
4. Wireless LED will turn off



2go™ PC



Intel-powered convertible classmate PC

Part of the Intel® Learning Series

Quick Start Guide

© 2008, Intel Corporation. All rights reserved. Intel and the Intel logo are trademarks of Intel Corporation in the U.S. and other countries.

* Other marks and brands may be claimed as the property of others.

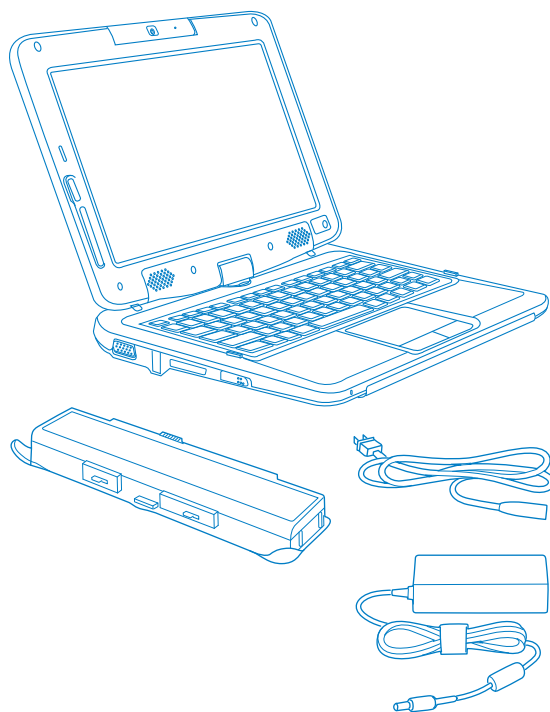
0109/MG/CMD/PDF 318938-002 US

1 Congratulations!

Congratulations on your purchase of an Intel-powered convertible classmate PC. Follow these simple instructions to get your classmate PC up and running.

What's in the box

- Intel-powered convertible classmate PC
- AC power cord and power adapter
- Battery
- Quick Start Guide
- Stylus

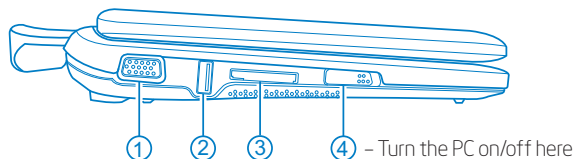


First use: After starting the PC the first time and initiating the operating system, you must restart the PC before using.

3 On/Off, Stylus, and Tablet Mode

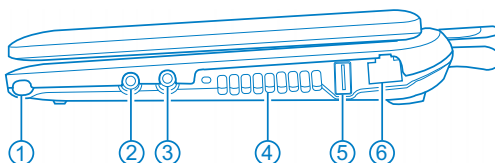
Left

1. External monitor port
2. USB port
3. SD Memory card slot
4. Power switch

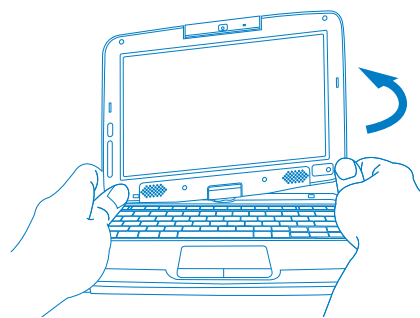


Right

1. Stylus pen slot
2. Microphone jack
3. Headphone jack
4. Ventilation opening
5. USB port
6. Internet connection (LAN) port



Stylus pen for touchscreen writing and reading.



Rotating the Screen

1. Gently turn the display in either direction.
2. Turn 180 degrees until panel locks into position.

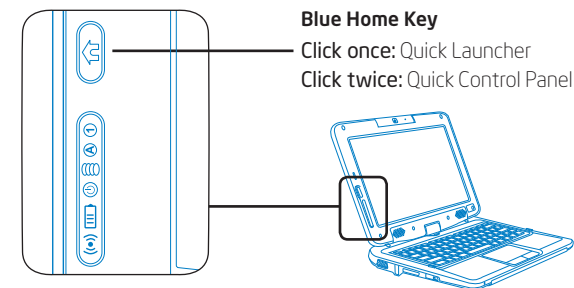
4 System Indicators and Camera

Blue Home Key and LEDs

The row of icons located to the left of the screen light up with different colors to indicate the system and power status of your classmate PC.

LEDs System/power indication

- ① Green light: Number lock on
- Ⓐ Green light: Caps lock on
- Ⓜ Green light: System is reading/writing data
- Ⓜ Green: Full charge and AC Adapter working
Orange: Battery charging
Blinking Orange: Low power
No Light: System off, battery not installed, or battery nonfunctional
- (•) Flashing Green and Orange: High temperature—Please power off PC and allow to cool
Flashing Green: WLAN sending/receiving
Steady Green: WLAN is on



Using the Built-in Rotating Camera

1. Rotate Camera to desired position
2. Single Click the Blue Home Key
3. On the Screen, Click the ArcSoft WebCam icon
4. Click the Capture icon to start taking pictures and video

